

O. P. JINDAL SCHOOL, SAVITRI NAGAR
Annual Examination – (2023-24)

Class/Sec- VI/_____
Subject – Science
Name _____

MM – 80
Time- 3 hrs
Roll No. _____

Fifteen minutes extra will be given for reading the Question Paper.

General Instructions –

1. The Question Paper comprises of 6 sections A,B,C,D,E,F. There are 24 questions in the Question Paper. All the questions are compulsory.
2. Section A, Q1 comprises of 12 MCQ type questions and carries 1 mark each.
3. Section B, Q2 is of case-based type question.
4. Section C, Q3 is Assertion-Reason type question.
5. Section D, Q4 to Q12 are very short answer type questions, carries 2 marks each.
6. Section E, Q13 to Q21 are short answer type questions, carries 3 marks each.
7. Section F, Q22 to Q24 are long answer type questions, carries 5 marks each.

SECTION - A

Q1. Choose the correct option.

(i) The method of separation used to separate stones from rice is

- (a) Handpicking (b) Threshing (c) Winnowing (d) Decantation

(ii) Butter is separated from milk by

- (a) Sedimentation (b) Filtration (c) Churning (d) Condensation

(iii) The components of a solution of salt in water can be separated by

- (a) Filtration (b) Crystallisation (c) Decantation (d) Evaporation

(iv) What helps to form a solution?

- (a) Stirring (b) Heating (c) Straining (d) Both a & b

(v) Which of the following leaves has reticulate venation?

- (a) Tulsi (b) Grass (c) Maize (d) Wheat

(vi) It holds the plant stand upright.

- (a) Stem (b) Leaf (c) Root (d) Branch

(vii) Carples are the small bones present in our

- (a) Feet (b) Palm (c) Leg (d) Head

(viii) How many vertebrae does our backbone consist of?

- (a) 22 (b) 24 (c) 33 (d) 13

(ix) Which of these is not an abiotic component?

- (a) Light (b) Plant (c) Soil (d) Air

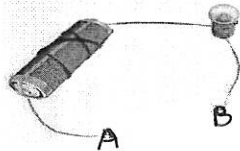
(x) Changes in our surroundings that make us respond to them are called

- (a) Stimuli (b) Life-cycle (c) Growing (d) Adaptation

(xi) An electric cell has two

- (a) Poles (b) Terminals (c) Wires (d) Adaptors

(xii)



In this activity if A and B are connected with different materials, the bulb will glow when they are connected with both the sides of a/an

- (a) Steel spoon (b) Screw driver (c) Pliers (d) Eraser

SECTION -B

Q2. Read the following paragraph and answer the questions.

The grains are separated from stalks by the process of threshing. In this process stalks are beaten to separate grains from the bundle of stalks (stem). This method is based on the fact that the stalks of the crop plant are soft material whereas the grains themselves are very hard. Being soft, stalks can be broken into pieces on beating but the grains remains unaffected.

Winnowing is used to separate heavier and lighter components of a mixture by wind or by blowing air. Rice flakes and potato wafers are lighter substances in the mixture. So these are separated from the given mixture by winnowing.

(i) Which amongst the methods would be most appropriate to separate grains from stalks?

- (a) Hand-picking (b) Winnowing (c) Sieving (d) Threshing

(ii) Winnowing is used to separate particles

- (a) Heavier and lighter (b) Bigger and smaller (c) Solid and liquid (d) Liquid and liquid

(iii) What is stalk?

- (a) Stem of grain plant (b) Seed of plant (c) Tendrils (d) Leaf of plant

(iv) What is used in winnowing?

- (a) Water (b) Wind (c) Soil (d) Sand

(v) Find odd one out.

- (a) Winnowing (b) Threshing (c) Hand-picking (d) Filtration

(vi) During threshing grains do not break, remain unaffected because grains are

- (a) Very soft (b) Very hard (c) Both a & b (d) None of them

SECTION -C

Q3. A statement of Assertion is given by the corresponding statement of Reason. Choose the correct answer.

- (a) Assertion and reason both are correct and reason is correct explanation for assertion.
(b) Assertion and reason both are correct and reason is not correct explanation for assertion.
(c) Assertion is correct but reason is wrong statement.
(d) Assertion is wrong but reason is correct statement.

(i) **Assertion** - A magnet can attract a copper wire.

Reason - Copper is a non-magnetic material.

(ii) **Assertion** - Most of the iron filings stick to the magnet at the ends.

Reason - Magnetic strength is maximum on the poles of a magnet.

SECTION -D

Q4. Write two main functions of stem of plants.

Q5. Draw two leaves to show parallel venation and reticulate venation.

OR

- Q5. Draw a tap root and a fibrous root.
Q6. Write one function each of ribcage and skull.
Q7. Explain any two types of movable joints.
Q8. How are cactus adapted to survive in a desert?

OR

- Q8. What are the differences between biotic and abiotic components.
Q9. What is a habitat? Name the two main types of habitats.
Q10. Why should an electrician use rubber gloves while repairing electric switch at your home?

OR

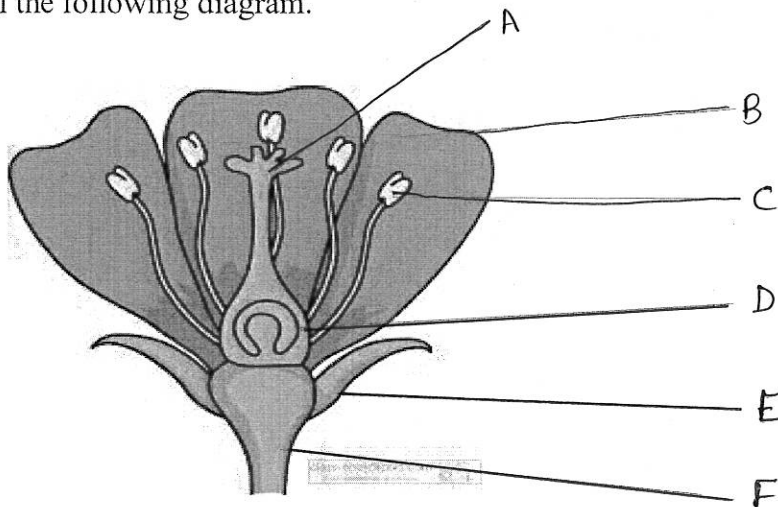
- Q10. What makes a bulb glow ?
Q11. Match the following.

- | | |
|------------------------|-----------------------|
| (i) Electric cell | Filament |
| (ii) Insulator | Path, current flows |
| (iii) Thin wire, glows | Source of electricity |
| (iv) Electric circuit | Rubber and plastic |

- Q12. If you put a bar magnet in a pile of nails. What will you observe?

SECTION -E

- Q13. Label the following diagram.



Q14. Define herb, shrub and tree by giving one example of each.

OR

Q14. How are roots modified?

Q15. Explain the movement of an earthworm.

OR

Q15. Write three functions of skeletal system.

Q16. Write any three features that separate living beings from nonliving. Mention a nonliving that shows two characteristics of living beings.

Q17. Why is speed important for survival in the grasslands for animals that live there?

Q18. Explain any three adaptations of camels that help it to survive in the desert regions.

Q19. What is a switch? How does it work to on/off electric appliances?

OR

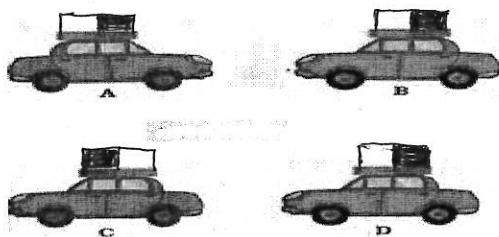
Q19. Differentiate between conductor and insulator. Is screw driver a conductor or insulator ?

Q20. Write any three uses of magnets.

OR

Q20. How can you make your own magnet? Is it a permanent or temporary magnet?

Q21. A magnet is kept on each car. Observe the diagrams and answer the following..



- (i) What will you observe between car A and B?
- (ii) Write your observation between C and D.
- (iii) Explain the reasons for both of your answers.

SECTION -F

Q22. How does a bird fly? Explain with a diagram.

OR

Q22. Draw and explain the movement of a fish.

Q23. How is a compass used to find directions? Draw a magnetic compass.

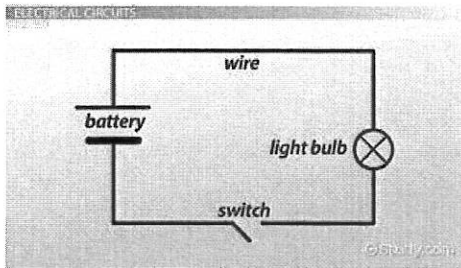
OR

Q23. Write any three properties of magnet. How can you keep your magnet safe?

Q24. Draw and label “inside view of a torch”.

OR

Q24.(i) Look at the condition. Does the bulb glow? Explain your answer.



(ii) Draw a cell, show both of its terminals and the carbon rod.
